



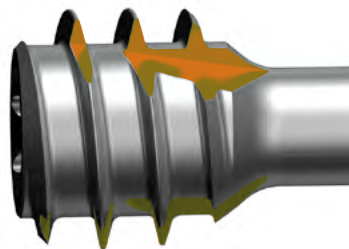
I.B.S.® LARGE

MID & HINDFOOT SCREW SYSTEM

COMPRESSION SCREW AND NEUTRALIZATION SCREW

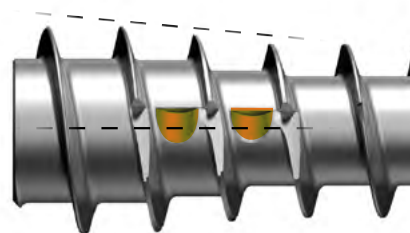
- ▶ The I.B.S.® Mid and Hindfoot screws are available in compressive version and in neutralization version fully threaded.
- ▶ The I.B.S.® compression and neutralization screws are cannulated, self-drilling and self-tapping.
- ▶ Made of Titanium alloy Ti6Al4V, the I.B.S.® Mid and Hindfoot screws are available in 4.5 – 6.5; 6,5 mm long distal thread (Cplus) and 8.0mm diameter. The I.B.S.® screws are delivered sterile in tube.

| Designation | I.B.S.® 4.5 | I.B.S.® 6.5 | I.B.S.® 6.5 CPLUS | I.B.S.® 8.0 |
|-----------------------|---------------------------------------|--------------------------------------------------------------|----------------------------------------|---------------------------------------|
| Diameter of the screw | 4.5mm | 6.5mm | 6.5mm | 8.0mm |
| Colour code | | | | |
| Type | Compression (C) Neutralization (N) | Compression (C) Distal thread 15 mm Neutralization (N) | Compression (C) Distal thread 30 mm | Compression (C) Neutralization (N) |
| Tip | Torx 15 | Torx 25 | Torx 25 | Torx 30 |
| Screw length | 20 > 70mm | 20 > 115mm | 60 > 115mm | 40 > 115mm |
| Kwire diameter | 1.6mm | 2.0mm | 2.0mm | 2.5mm |
| Drill diameter | 3.0mm | 4.3mm | 4.3mm | 5.5mm |



PROXIMAL THREAD FOR COMPRESSION SCREW

- ▶ Thread shape designed for optimal grip and penetration thru cortical bone.
- ▶ Sharpened thread increase stability to the screw inside the bone.



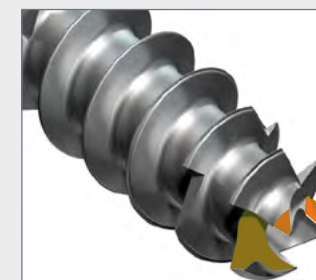
PROXIMAL THREAD NEUTRALIZATION SCREW

- ▶ **Head Conical shape** - Increase the perception of stability once it reaches its final position.
- ▶ **Inter-thread notches** in the Neutralization screws reduce the risk of stress fracture during tightening.



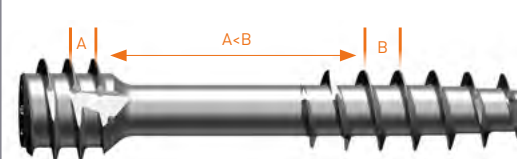
TORQUE SCREW HEAD

- ▶ Torx Head - shape supports a higher torque without degradation.
- ▶ Available for Compression and Neutralization



SELF-DRILLING

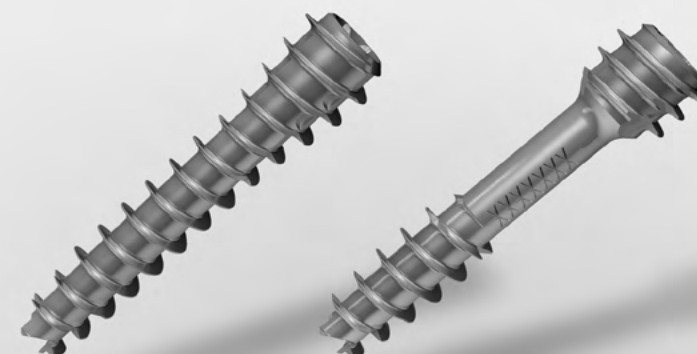
- ▶ Distal teeth angled for ideal self-drilling performance.



— In2BONES THREAD
— REGULAR THREAD

DISTAL THREAD

- ▶ **Pitch ratio** between distal and proximal threads for optimal compression. (A)-(B)
- ▶ **Distal Thread** count is optimized to allow accurate placement of the screw in the osteotomy site.
- ▶ Thread profile ① shaped to improve the insertion and fixation inside the cortical bone.



SCREW

| I.B.S.® 4.5-C Compression screw | Length | I.B.S.® 4.5-N Neutralization screw |
|------------------------------------|--------|---------------------------------------|
| S45 ST120 | 20mm | S45 ST220 |
| S45 ST122 | 22mm | S45 ST222 |
| S45 ST124 | 24mm | S45 ST224 |
| S45 ST126 | 26mm | S45 ST226 |
| S45 ST128 | 28mm | S45 ST228 |
| S45 ST130 | 30mm | S45 ST230 |
| S45 ST132 | 32mm | S45 ST232 |
| S45 ST134 | 34mm | S45 ST234 |
| S45 ST136 | 36mm | S45 ST236 |
| S45 ST138 | 38mm | S45 ST238 |
| S45 ST140 | 40mm | S45 ST240 |
| S45 ST142 | 42mm | S45 ST242 |
| S45 ST144 | 44mm | S45 ST244 |
| S45 ST146 | 46mm | S45 ST246 |
| S45 ST148 | 48mm | S45 ST248 |
| S45 ST150 | 50mm | S45 ST250 |
| S45 ST155 | 55mm | S45 ST255 |
| S45 ST160 | 60mm | S45 ST260 |
| S45 ST165 | 65mm | S45 ST265 |
| S45 ST170 | 70mm | S45 ST270 |

| I.B.S.® 8.0-C Compression screw | Length | I.B.S.® 8.0-N Neutralization screw |
|------------------------------------|--------|---------------------------------------|
| S80 ST140 | 40mm | S80 ST240 |
| S80 ST145 | 45mm | S80 ST245 |
| S80 ST150 | 50mm | S80 ST250 |
| S80 ST155 | 55mm | S80 ST255 |
| S80 ST160 | 60mm | S80 ST260 |
| S80 ST165 | 65mm | S80 ST265 |
| S80 ST170 | 70mm | S80 ST270 |
| S80 ST175 | 75mm | S80 ST275 |
| S80 ST180 | 80mm | S80 ST280 |
| S80 ST185 | 85mm | S80 ST285 |
| S80 ST190 | 90mm | S80 ST290 |
| S80 ST195 | 95mm | S80 ST295 |
| S80 ST300 | 100mm | S80 ST400 |
| S80 ST305 | 105mm | S80 ST405 |
| S80 ST310 | 110mm | S80 ST410 |
| S80 ST315 | 115mm | S80 ST415 |

| I.B.S.® 6.5-C* Compression screw | Length | I.B.S.® 6.5-N Neutralization screw |
|-------------------------------------|--------|---------------------------------------|
| S65 ST120 | 20mm | S65 ST220 |
| S65 ST125 | 25mm | S65 ST225 |
| S65 ST130 | 30mm | S65 ST230 |
| S65 ST135 | 35mm | S65 ST235 |
| S65 ST140 | 40mm | S65 ST240 |
| S65 ST145 | 45mm | S65 ST245 |
| S65 ST150 | 50mm | S65 ST250 |
| S65 ST155 | 55mm | S65 ST255 |
| S65 ST160 | 60mm | S65 ST260 |
| S65 ST165 | 65mm | S65 ST265 |
| S65 ST170 | 70mm | S65 ST270 |
| S65 ST175 | 75mm | S65 ST275 |
| S65 ST180 | 80mm | S65 ST280 |
| S65 ST185 | 85mm | S65 ST285 |
| S65 ST190 | 90mm | S65 ST290 |
| S65 ST195 | 95mm | S65 ST295 |
| S65 ST300 | 100mm | S65 ST400 |
| S65 ST305 | 105mm | S65 ST405 |
| S65 ST310 | 110mm | S65 ST410 |
| S65 ST315 | 115mm | S65 ST415 |

* Distal thread length 15 mm

| I.B.S.® 6.5-C PLUS** Compression screw | Length |
|-------------------------------------------|--------|
| S65 ST560 | 60mm |
| S65 ST565 | 65mm |
| S65 ST570 | 70mm |
| S65 ST575 | 75mm |
| S65 ST580 | 80mm |
| S65 ST585 | 85mm |
| S65 ST590 | 90mm |
| S65 ST595 | 95mm |
| S65 ST600 | 100mm |
| S65 ST605 | 105mm |
| S65 ST610 | 110mm |
| S65 ST615 | 115mm |

** Distal thread length 30 mm

INDICATIONS

The I.B.S.® compression and neutralization osteosynthesis screws are intended for:

- The fixation of arthrodesis, osteotomies or fractures of long or short bones of the upper and lower limbs,
 - Osteosynthesis requiring a mono or bicortical compression.
- The size of the chosen screw should be adapted to the specific indications.

CONTRAINDICATIONS

The implant should not be used in a patient who has currently, or who has history of:

- Acute or chronic systemic inflammations,
- Active infections,
- Sensitivity/allergies to the implant materials,
- Bone pathologies that may compromise the rigidity of the implant fixation (examples include: osteoporosis, acute cystic developments, acute osteopenia, bone tumor, etc...)

RECOMMENDATION

It is recommended to carefully read the instructions for use available in the package insert.

DISPOSITIFS

CE Classification (Directive MDD 93/42/EC)

- Implants : Class CE IIb - CE2797
- Instruments connected to a power driver: Class CE IIa - CE2797
- Instruments with a measuring function: Class CE Im - CE2797
- Other instruments: Class CE I

REIMBURSEMENT

Reimbursement may vary from countries to countries. Check with local authorities.

MANUFACTURER

In2Bones SAS
28, chemin du Petit Bois - 69130 Ecully - FRANCE
Phone : +33 (0)4 72 29 26 26 - Fax : +33 (0)4 72 29 26 29

DOCUMENT

- Reference : BR-DIG-IBSLARGE-EN-012020

Availability of these products might vary from a given country or region to another, as a result of specific local regulatory approval or clearance requirements for sale in such country or region.

Always refer to the appropriate instructions for use for complete clinical instructions.

Non contractual document. The manufacturer reserves the right, without prior notice, to modify the products in order to improve their quality.

CAUTION: Federal law (USA) restricts this device to sale and use by, or on the order of a physician.

Except otherwise specified, all commercial trademarks used in this document, In2bones and the In2bones logo are trademarks or registered trademarks of In2bones or its subsidiaries.



www.in2bones.com/ifu

